

Migrating from PAM



Thanks for your interest in moving to agCOMMANDER.

About agCommander for PAM users	1
To Log into the Desktop Version (Requires an Internet connection)	2
To log into the Tablet Version (Requires an Internet connection)	2
Consultants	3
Help Videos	3
How do I sign up?	3
The Cost of Migrating your PAM Data to agCOMMANDER	4
Fairport Club Members	4
Finally...	4
Migrating your data	4
Background	4
Who does the migration process?	4
Some things to consider before we migrate your data	5
Machinery Operations vs Machinery Assets:	5
Paddock Maps (including Arable Area Maps & Perennial Area Maps)	5
Other Maps	5
Livestock	6
Inventory of Consumables	6
Chemicals and Brand Names	7
Tidying up your Consumable (and other) lists in PAM	8
Input Costs	8
Input costs are managed very differently in agCOMMANDER	8
What doesn't get migrated	9

About agCommander for PAM users

agCOMMANDER has been under development for the past 4 years and we've had it out on various sites since early 2020, for testing. The number of test sites grew to over 60...

In the main these sites are former PAM users and we have migrated their PAM data across to agCOMMANDER.

- *This is going to be a real game changer!*
- *Had a farm audit yesterday. The guy covers all of Australia. Said he'd never seen anything like it. Blew him away!*

- *Staff really happy here. The seamlessness in the software makes it so user friendly... they are empowered to use it, plus all the reports give them the feedback they need*
 - *Murray - Large family grain & livestock producer, WA*

The mobile version of agCOMMANDER has been available for a year but with limited modules. The Cropping, Inventory & Chemical Lookup modules were added in June 2021. The Livestock module is still in development and is expected to be released in September 2021

Unlike for PAM, for agCOMMANDER we're not charging more if clients choose to use the mobile app!!

To have a "look around" we have set up a demo mixed farming operation, a vineyard, and a horticulture operation with read only / report only access. Meaning you can go pretty much everywhere, generate reports etc and get a feel for it.

- The overall agCommander reporting flexibility is really excellent. Being able to configure the columns included, their position, sort by, group by, summaries and expand/collapse options and so on.. is tremendous
 - Peter - The world's largest macadamia nut producer, QLD, NSW, South Africa

To Log into the Desktop Version (Requires an Internet connection)

Simply click on this link <https://webapp.agcommander.com> or copy/paste into the search bar. Then when prompted enter the Username and Password below that best relates to your enterprise

To log into the Tablet Version (Requires an Internet connection)

On your tablet or iPad simply click on this link <https://tablet.agcommander.com> or copy/paste into the search bar.

Then when prompted enter the Username and Password below that best relates to your enterprise

Demo of a Mixed Farming operation (suitable for Livestock, Cropping, Vegetable producers etc.)

Username agcdemo@agcommander.com

Password ... agCDemo2020

Demo of a Viticulture Operation

Username viticulture@agcommander.com

Password ... Viticulture2020

Demo of a Horticulture Operation (Orchards)

Username horticulture@agcommander.com

Password ... Horticulture2020

How to create an icon for agCommander on your tablet

Save a shortcut icon to your home screen (makes it quick and easy to locate and run it.. for future reference)

1. Tap the "Safari" icon or your familiar Web browser icon and **then enter this address:**
<https://tablet.agcommander.com>
2. Wait for the website to load and then tap "Share" icon. The icon is an arrow coming out of a box.
3. Select "Add to Home Screen" to open the Add to Home dialog box.
4. Type the name "agCOMMANDER" (recommended) as this becomes the display name for the shortcut icon.
5. Tap the "Add" button to save the shortcut icon to the Home screen on your device.

- *My wife just had to dive back into PAM for some old reports. She and our office girl wish to thank you on the great improvement AgCommander is, contrasted against PAM, certainly in the reporting. My thoughts are the same.*
 - *Chris - Kiwifruit operation in NZ with ~ 50 staff*

Consultants

Consultants are saying things like: *"This is very comprehensive" & "I wish the other software I have to use could do this..."* & a user wrote to say about his consultant ... *"He is actually impressed by agCommander..."*

As a client, you can give your consultants access for free. Just set them up with whatever permissions you're comfortable with. Just ensure they sign up in the agCOMMANDER website as a consultant here: <https://www.agcommander.com/consultant>

Help Videos

We have 20 or more videos for help with getting your head around the new concepts. Look for the small video icons dotted about the application or go to the About screen / Videos Tab in the application.

While we are on this topic let me tell you about our new LIVE CHAT feature!.. to access support on the go, click on bright green chat icon in the main toolbar (Left hand side of screen) Also worth noting is the "Knowledge Base" This can be found on the "About" screen by clicking the Information icon in the main toolbar (Left hand side of screen)

How do I sign up?

If you decide to go ahead, click on this link to get started ...

<https://www.agcommander.com/plans-to-suit-your-business>

All clients signing up for the Multifarm and Multifarm Pro plans automatically get a 14 trial period.

The Cost of Migrating your PAM Data to agCOMMANDER

Once/If you sign up, let us know if you want your PAM data migrated. We do that here at our office so we would need your PAM backup file emailed to us & we would migrate all your data for a once off fee of \$500 (plus GST)

... you get a 50% discount off that if you have current Fairport Club Membership.

- I like the look of it. It's certainly better than the others we looked at.
 - Tim - Manager of a corporate mixed cropping and livestock operation, NSW

Fairport Club Members

If you have current Fairport Club Membership and you choose to hold off for a while and subscribe later, we will apply any remaining Fairport Club Membership credit to the migration fee &/or your agCommander subscription.

Finally...

This software has continued to evolve along with farming over the past 30+ seasons. Although we cant help but to feel partly responsible for this 😊, we always encourage you to submit your thoughts and feedback on ways we can improve. To make this possible we have implemented a "Feature Requests and Suggestions" page where your suggestions can be entered at will. This is in full swing already and you will note that you can vote on the ideas already posted in there and others can come along and vote for your ideas too. Meaning your ideas can gain momentum towards being added to the product. This can be found on the "About" screen by clicking the Information icon in the main toolbar (Left hand side of screen)

Migrating your data

Background

We understand that migrating your PAM data to agCOMMANDER is an important part of moving our clients forward to our new platform and to make the process as completed and accurate as possible there has been around 12 man months of work put into the PAM->agCOMMANDER migrator. We began building the procedures that do the migration around 15 months ago and through 2020 we worked on refining it.

Who does the migration process?

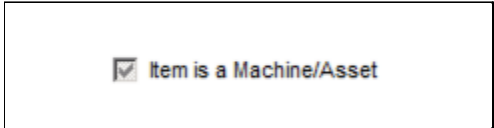
We perform the migration process here in our office by getting your latest PAM backup. If you are running our PAM SaaS hosted system, we can easily obtain your data from that server. If you are running PAM on your local hardware, we will need you to back your PAM data up to your hard disk and then email that back up "zip" file to us. There is a one off cost associated with the migration service. \$250 for Fairport Club Members, \$500 for non-members.

Please read these notes & please call us up if you are in doubt about anything.

Some things to consider before we migrate your data

Machinery Operations vs Machinery Assets:

In agCOMMANDER we have separated Machinery Operations from Machinery Assets, whereas in PAM, people tended to have a list of one thing or the other or even a mix of both. We added a new option in the Machinery setup screen in PAM to enable you to indicate which items in your list are Assets. Please ensure that you have a version of PAM which is later than or equal to Version 8.9.945, go to Configuration / Machinery and Manual Tasks... and on the Machinery Tab.. go down your list and tick those which you want to be in your Asset list in agCommander



Paddock Maps (including Arable Area Maps & Perennial Area Maps)

For your Paddock maps to import correctly, all of the paddocks need to be linked to their polygons.

If you are in any doubt how to do this refer to page 51 & 52 in this manual

<https://fairport.com.au/fairport/Help/MappingManual.pdf>

In agCOMMANDER the concept of “paddocks linked to their polygons” does not exist. We actually store the paddock boundaries right inside the paddock records... so if you retire a paddock, that polygon retires with the paddock.

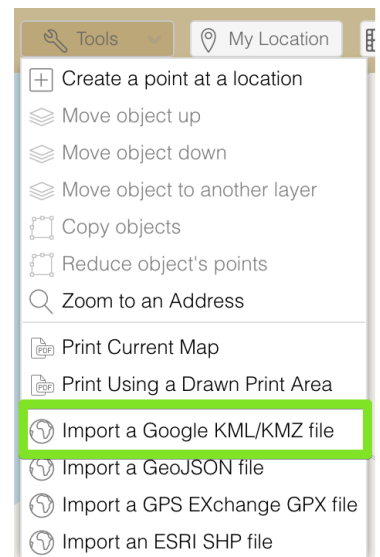
When you need to draw or import a worked area for a job, that polygon is stored in the job record. So... map objects are handled completely differently in agCOMMANDER.

One thing that might be a surprise when you open up the Mapping Module is: We automatically create a View per Farm, a layer Group Per Farm and automatically create the Boundaries Layers inside those Layer Groups. This is all done so the application “knows” what are layers generated from the paddocks table & those that are user-created layers. It keeps things in order for the program (and you!)

Other Maps

The migrator will attempt to migrate all your map layers and objects.

We strongly advise you to delete any layers or indeed layer groups that you no longer require to avoid cluttering up your agCOMMANDER mapping system. E.g. Delete the World Maps & the Demo Maps



PLEASE NOTE: We have had some situations where not all maps have migrated. The solution to fixing that is to Export your required map layers out of PAM in KML format and import them into agCOMMANDER in the Mapping Module .. Look under Tools

If you don't want the migrator to import all your maps (other than the linked paddocks) please tell us and we will stop the migration from doing that OR... alternatively, you can easily remove them from agCOMMANDER later

Livestock

If you are wanting livestock data migrated, we **strongly advise you to choose a starting point (date) from which you are confident that your livestock tallies are in good shape**. If you have old data that has a lot of tally errors, you will need to rectify the problems either in PAM before we migrate your data or early on in agCOMMANDER.

Inventory of Consumables

For two reasons we do not migrate the PAM inventory of consumables records. Firstly, the way we handle the setting of inventory tracking options in agCOMMANDER is completely different to how it is done in PAM and secondly, we are aware that many clients have pretty messed up inventory systems in PAM.

Here's what to do if you are confident in your PAM's Inventory Stock On Hand status:

- a. Generate and print out a Stock On Hand Report in PAM
- b. Enter those stock on hand values into agCOMMANDER as your opening stock numbers

PLEASE let us know how you set up your inventory tracking in PAM so we can manually update the settings in agCOMMANDER for you.

E.g. You track all Insecticides, Herbicides & Fungicides by Batch Number

Or... You track All Chemical Types by Batch Number & Location

Or... You track everything but not by location or batch number

The options for tracking inventory in agCOMMANDER are all done on a consumable by consumable basis... which is fine if you're not migrating PAM data ... so for "migrators".. Please help us help you by telling us how you want your chemicals and fertilizers set up:

- a) Track everything, but not down to the batch number or location level
- b) Track specific chemical types by batch number & / or location
- c) as above for fertilizers ... etc. etc.

... let us know how you want to work it & we will do our best to update the system in the “back end” for you.

Chemicals and Brand Names

In agCOMMANDER we have the complete set of registered chemicals available along with their Labels, their Hosts, Pests etc and MSDSs.

We strongly advise users to set up “On Farm” Chemical names to keep data entry simple, and then, using the on-board chemical database, set up the associated Brand Names that you purchase for those On-Farm chemicals

E.g. Set up Glyphosate 450 to represent all the Brand Names you may purchase with that formulation.

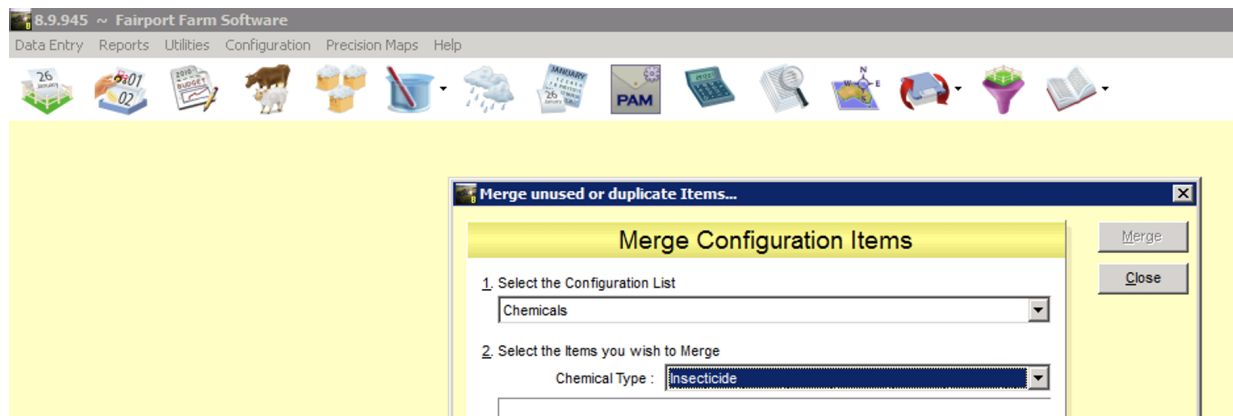
Here is a screenshot of an Inventory Purchase showing how to associate a Brand name with your On-Farm name.

The screenshot displays two main components of the agCOMMANDER interface:

- INVENTORY PURCHASE OR INITIAL STOCK OF (Left Panel):** This panel contains fields for 'Date' (Feb 08, 2021 15:27), 'Inventory Type' (Chemical), 'On-Farm Chemical Name' (Glyphosate 450 (Herbicide)), 'Chemical Brand Name' (with a search icon), 'Batch Number', 'The Quantity is in' (radio buttons for Packages and Litres), 'Package Size' (dropdown), and 'No. Packs' (0.00).
- CHEMICAL SEARCH (Right Panel):** This panel shows search filters (Problems, Host, Australian State) and a table of results. The 'Constituents' field is set to 'Glyphosate' and 'Display Constituents?' is checked. A green arrow points from the 'On-Farm Chemical Name' field to the 'Choose' button in the table.

Choose	Consumable	Manufacturer	Label	MSDS	Chemical Type	Registration Number
+	ANHUI GUANGXIN GLYPHOSATE IPA 450 SL HERBICIDE	Anhui Guangxin Agr...	View	View	Herbicide	87574
+	4FARMERS GLYPHOSATE 360 HERBICIDE	4 FARMERS AUSTRALIA	View	View	Herbicide	53852
+	4FARMERS GLYPHOSATE 450 HERBICIDE	4 FARMERS AUSTRALIA	View	View	Herbicide	48552
+	4Farmers Glyphosate 450 MEA	4 FARMERS AUSTRALIA	View	View	Herbicide	87481
+	4FARMERS GLYPHOSATE 470 HERBICIDE	4 FARMERS AUSTRALIA	View	View	Herbicide	55511
+	4FARMERS GLYPHOSATE 510 HERBICIDE	4 FARMERS AUSTRALIA	View	View	Herbicide	88662
+	4FARMERS GLYPHOSATE 875 HERBICIDE	4 FARMERS AUSTRALIA	View	View	Herbicide	56857
+	4FARMERS POTASSIUM GLYPHOSATE 540 HERBICIDE	4 FARMERS AUSTRALIA	View	View	Herbicide	68024
+	A1 CHEMICALS GLYPHOSATE 360 HERBICIDE	Flotan Pty Ltd	View	View	Herbicide	53805
+	AC GLYPHOSATE 450 HERBICIDE	AXICHEM PTY LTD	View	View	Herbicide	69883
+	AC GROWLER 450 HERBICIDE	AXICHEM PTY LTD	View	View	Herbicide	63852

Tidying up your Consumable (and other) lists in PAM



If your chemical list in PAM is a bit of a mess, you might want to make use of the utility in PAM that enables you merge items that are duplicates.

To access that facility in PAM, go to Utilities / Database Maintenance / Merge Configuration List Items

Input Costs

Input costs are managed very differently in agCOMMANDER

When migrating your costs from PAM, we firstly order all your data in chronological order and record the first cost for each item.. That being the starting cost. Thereafter, each time there's a cost change for a given input item we store that cost & date.

These costs are kept in a special Input Costs table in agCOMMANDER which you have complete control over ... as opposed to PAM where all the costs are stored in the job record and are therefore difficult to update / maintain.. Relying on the "Backdate costs" system.

The agCOMMANDER input costs system is a pure "lookup" system where, to display the costs for each record the system checks the job date then finds the prevailing input cost for each item as at that job date.

See the image below for an example. By the way there's also a special screen where you can update all or some of your input costs in one go.

INPUT COSTS: 24D AMINE (HERBICIDE)

+ Add

	Cost	Starting Date ↓	"Cost Per" Units
 	\$5.60	01 Jul 20	Litre
 	\$5.30	01 Jan 20	Litre
 	\$5.30	01 Jan 18	Litre
 	\$5.30	01 Jan 17	Litre
 	\$5.30	01 Jan 16	Litre
 	\$5.30	01 Jan 15	Litre
 	\$5.30	01 Jan 14	Litre
 	\$5.30	01 Jan 13	Litre
 	\$5.30	01 Jan 12	Litre
 	\$5.30	01 Jan 11	Litre

✓ Save

✕ Cancel

What doesn't get migrated

- Budgets
- Historical Work Orders (i.e. ones that are dated in the past)
- Recommendations
- Inventory of Consumables